

DCH-5000P

Multi-Format professional HDTV Processor

As the latest version of PBI's flagship professional IRD, the DCH-5000P's capability to decode all video formats. Coupled with a wide choice of input options for all transmission mediums, DCH-5000P provides significant benefits and maximum flexibility for professionals who wish to migrate their operations from MPEG-2 SD to MPEG-4 AVC HD. With a built-in Multiplexer/Filter, the output TS could be highly customized. LAN control and monitoring are achieved by TCP/IP, SNMP and HDMS*. Equipped with 2 PCMCIA slots, DCH-5000P supports various CA systems such as Conax, Cryptoworks, Irdeto, NDS, Mediaguard, SECA and Viaccess etc. All of these flexibilities make the receiver the best choice for your digital Headend System.

(*Headend Devices Management System, a PBI's proprietary software).



Features

- * MPEG-2/4 SD and HD 4:2:0 decoding
- * MPEG-4 AVC SD decoding
- * MPEG-4 AVC HD decoding
- * HD to SD down-conversion
- * HD-SDI video output
- * SDI video output
- * YPbPr video output
- * 2 Stereo pair audio decode
- * Built-in Multiplexer/Filter
- * IP input or output with UDP/RTP
- * Multicast and Unicast on IP
- * Supports various Conditional Access systems
- * SDI video output with digital audio embedded
- * Compatible with Multiple De-encrypt CI modules
- * Teletext VBI, EBU subtitle and DVB subtitle
- * Upgradable through LAN
- * Easy-to-use LCD menu

Specifications

| QPSK Demodulation (Fully comply with DVB-S, MPEG-2, and ETSI 300421 standards) | |
|--|-----------------------------|
| Input Frequency Range | 950~2150MHz |
| Input Level | -25dBm~65dBm |
| Input Impedance | 75Ω F type |
| Symbol Rate | 2~45Mb/s (SCPC or MCPC) |
| Rolling Off Factor | 0.35 |
| Punctured Rates | 1/2, 2/3, 3/4, 5/6, 6/7,7/8 |

Specifications are subject to change without notice

Team-up with PBI, Brighten Your Digital View!

WWW.PBI-CHINA.COM



地址: 北京市海淀区苏州街75号鼎钧大厦401室
邮编: 100080 E-mail: mkt@pbicn.com
电话: 010-82617178
传真: 010-82610263

Room 401, Bld.Dingjun Dasha, No.75 SuZhou Street,
Haidian District, Beijing, China, 100080
Tel: +86-10-82617178
Fax: +86-10-82610263

| | |
|---|---|
| Reeds Salomon Decoding | 204, 188, T = 8 & I=12 |
| DVB-C QAM Demodulation | |
| Tuner | |
| Input Symbol Rate Range | 1~7Mbps (PAL), 1~6Mbps (NTSC) |
| Demodulation | 16/32/64/128/256QAM |
| Tuner Bandwidth | 6 MHz or 7 MHz or 8 MHz |
| Input | |
| Frequency Range | 50~860MHz |
| Digital Signal Input Level | -15~15dBmV |
| Input Impedance | 75Ω, IEC Female (7/8MHz) or F Female (6MHz) Input |
| DVB-T COFDM Demodulation (Fully comply with DVB-T&MPEG2 standards) | |
| Tuner | |
| Input Symbol Rate Range | 4.98~31.67Mbit/s (8MHz bandwidth) |
| Demodulation | COFDM |
| Constellation | QPSK, 16QAM, 64QAM |
| Tuner Bandwidth | 8MHz |
| FFT mode | 2K/8K |
| Guard Interval | 1/4, 1/8, 1/16, 1/32, off |
| FEC Code Rate | 1/2, 2/3, 3/4, 5/6 and 7/8 |
| Input | |
| Frequency Range | 470-862MHz (8MHz)、174-230MHz (7MHz) |
| Digital Signal Input Level | -20~-70dBmV |
| Input Impedance | 75Ω,IEC Female (7/8MHz) or F Female (6MHz) Input |
| DS3 Input | |
| Input Impedance | 75Ω |
| Connector | BNC |
| Maximum Input Code Rate | 44.736Mbit/s |
| Format | Unframed Framing according to G.804 / G.752 (DS3) |
| DS3 Loop Through Output | |
| Impedance | 75Ω |
| Maximum Output Code Rate | 44.736Mbit/s |
| Connector | BNC |
| Format | Unframed Framing according to G.804 / G.752 (DS3) |
| TS over IP Output | |
| 100base-T | RJ45 |
| Maximum Output code Rate | 70Mbits/s |
| UDP/RTP | Multicast or Unicast |
| Multicast Control Protocol | IGMPV2 |
| CPU | |
| Chipset | STi7109 |

Specifications are subject to change without notice

Team-up with PBI, Brighten Your Digital View!

WWW.PBI-CHINA.COM



地址：北京市海淀区苏州街75号鼎钧大厦401室
 邮编：100080 E-mail: mkt@pbicn.com
 电话：010-82617178
 传真：010-82610263

Room 401, Bld.Dingjun Dasha, No.75 SuZhou Street,
 Haidian District, Beijing, China, 100080
 Tel: +86-10-82617178
 Fax: +86-10-82610263

| | |
|-----------------------|--|
| Clock Frequency | 266MHz |
| SDRAM | 32Mbyte/64Mbyte |
| FLASH | 16Mbyte |
| Rear Panel | |
| LNB Input and Output | 1× Input, 1×loop through output |
| Power Supply | AC 90~240V,50~60Hz |
| RS-232 | 1×9-pin D-sub male(for software update,Max Data Rate is 115200bps) |
| RJ45 | 1×Ethernet control port |
| ASI input | 1 |
| ASI output | 1 |
| SDI output | 1 |
| Audio Balance output | 1 |
| YPbPr output | 1 |
| CVBS output | 1×RCA, 1×BNC |
| AES_EBU Output | 1×XRL port |
| General | |
| Power Supply | AC 90V~260V 50Hz/60Hz |
| Net Weight | 5Kg |
| Dimensions | 44mm×255mm×483mm |
| Operating Temperature | 0~45℃ |
| Storage Temperature | 20~70℃ |

DCH-5000P Multi-Format Professional HDTV Processor Option List

| Function | Model No. | DCH-5000P-30xx | | | | | DCH-5000P-42xx | | | | | DCH-5000P-44xx | | | | |
|----------------------------------|-----------|----------------|-----|----|----|----|----------------|-----|----|----|----|----------------|-----|----|----|----|
| | | -S | -S2 | -T | -C | -D | -S | -S2 | -T | -C | -D | -S | -S2 | -T | -C | -D |
| DVB-S Input/Loop through Output | | ● | | | | | ● | | | | | ● | | | | |
| DVB-S2 Input/Loop through Output | | | ● | | | | | ● | | | | | ● | | | |
| DVB-T Input/Loop through Output | | | | ● | | | | | ● | | | | | ● | | |
| DVB-C Input/Loop through Output | | | | | ● | | | | | ● | | | | | ● | |
| DS3 Input/Loop through Output | | | | | | ● | | | | | ● | | | | | ● |
| 32 Channel TS/IP Output | | | | | | | | | | | | ● | ● | ● | ● | ● |
| 6 Channel TS/IP Output | | | | | | | ● | ● | ● | ● | ● | | | | | |
| PCMCIA Slot x 2 | | | | ● | | | | | ● | | | | | ● | | |
| TS Input & Output | | | | ● | | | | | ● | | | | | ● | | |
| SDI Output(HD-SDI) | | | | ● | | | | | ● | | | | | ● | | |
| HDMI Output | | | | ● | | | | | ● | | | | | ● | | |
| CVBS Output | | | | ● | | | | | ● | | | | | ● | | |
| YPbPr Output | | | | ● | | | | | ● | | | | | ● | | |
| AES_EBU Output | | | | ● | | | | | ● | | | | | ● | | |
| LAN Control(SNMP) | | | | ● | | | | | ● | | | | | ● | | |
| | | ● Standard | | | | | | | | | | | | | | |

Specifications are subject to change without notice

Team-up with PBI, Brighten Your Digital View!

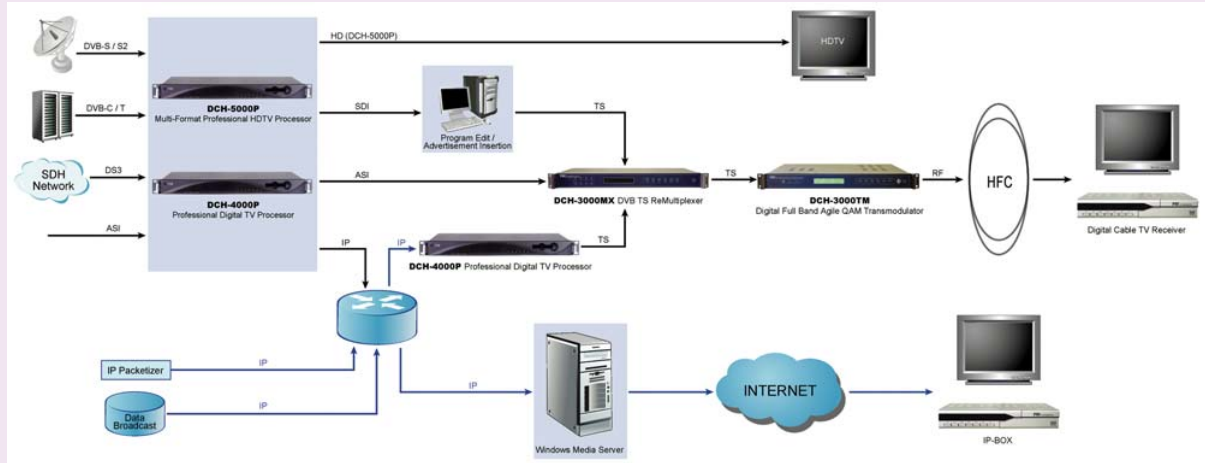
WWW.PBI-CHINA.COM



地址: 北京市海淀区苏州街75号鼎钧大厦401室
 邮编: 100080 E-mail: mkt@pbicn.com
 电话: 010-82617178
 传真: 010-82610263

Room 401, Bld.Dingjun Dasha, No.75 SuZhou Street,
 Haidian District, Beijing, China, 100080
 Tel: +86-10-82617178
 Fax: +86-10-82610263

Headend System



Specifications are subject to change without notice

Team-up with PBI, Brighten Your Digital View!

WWW.PBI-CHINA.COM



地址：北京市海淀区苏州街75号鼎钧大厦401室
邮编：100080 E-mail: mkt@pbicn.com
电话：010-82617178
传真：010-82610263

Room 401, Bld.Dingjun Dasha, No.75 SuZhou Street,
Haidian District, Beijing, China, 100080
Tel: +86-10-82617178
Fax: +86-10-82610263